

Long lunch to be gourmet extravaganza

IF you're the sort of person who is partial to a long lunch, there's only one place in the entire world to be this Sunday.

Albert St will transform into a gourmet extravaganza for a succulent long lunch to embrace the opening weekend of Brisbane Festival 2008.

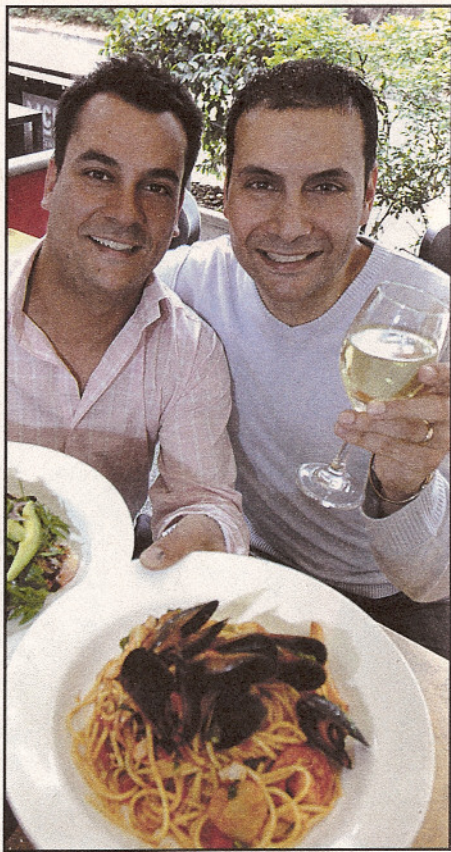
Celebrated Sydney chef Steve Manfredi will join Albert Street restaurateurs to create a complete food experience featuring Queensland's world famous seafood and produce.

Participating restaurants include Ashala, The Brewhouse Cafe, Mondial, Gilhooley's, Jeremy's and Pane e Vino. The long lunch is being billed as "a divine gastronomic experience from the finest ingredients".

The Albert Street Lunch is on July 20, noon-4pm between Elizabeth and Charlotte streets.

Tickets are \$85 plus booking fee for a five-course meal, including wine and beer.

Phone 136 246 or visit www.brisbane festival.com.au.



PJ147499

YUM: Gino and Tony D'Arienzo, from Pane E Vino, will be taking part in the Albert Street Lunch.